

Stock Number: 460360

Model: S350 Serial Number: 1W90S350AM0001438

EVAL INSPECTION — ADVANCED — FORESTRY SKIDDERS

2021 Weiler S350
Stock: 460360
Serial: 1W90S350AM0001438
Warranty Unknown

STORAGE LOCATION
Dobbs Equipment Southeast, LLC / 177349
Grovetown, GA, 30813
Contact:

PHOTOS (35 Total)



SUMMARY

Overall Condition: AVERAGE

Overall Comments: MACHINE WORKS AND FUNCTIONS AS IT SHOULD. EVERYTHING DRY MINUS HOSES LEAKING IN CENTER SECTION. A/C AND HEAT WORKS GREAT. MACHINE HAS CODES

Evaluator's Name: TRAVIS HOWARD

Operated Machine: Yes
Hours: 7,528

	E X C	G O O D	A V G	F A I R	P O O R	N / A	Comments	Estimated Cost		
								Parts	Labour	Total
General Appearance		X						0	0	0
Instruments / Controls		X						0	0	0
Cooling System Checks			X					0	0	0
Engine Checks			X					0	0	0
Transmission Checks			X					0	0	0
Differential, Brakes and Final Drive Checks			X					0	0	0
Hydraulic System Checks			X					0	0	0
Chassis and Frame Checks			X					0	0	0
Ground Engaging Tools								0	0	0
Tyres/Rims								0	0	0

GENERAL APPEARANCE

	NEW	GOOD	USABLE	REPAIR	REPLACE	N/A	Comments	Estimated Cost		
								Parts	Labour	Total
Paint		X								
Sheet Metal		X								
Rust / Corrosion		X								
Seat / Seat Belt / Rotation		X								
Doors / Glass		X								
Lights			X							
Mirrors			X							
Cab Interior		X								
Periodic Maintenance						X				
PIPS Complete						X				
Parking Brake / Linkage / Lock		X								
Decals		X								
Operators Manual						X				
Pilot Shut Off / Neutral Lock		X								
Shields/Guards(Drive Shaft)		X								
Section Summary		X								

INSTRUMENTS / CONTROLS

	NEW	GOOD	USABLE	REPAIR	REPLACE	N/A	Comments	Estimated Cost		
								Parts	Labour	Total
Hour Meter: Original <input checked="" type="checkbox"/> Yes <input type="checkbox"/> No Operating <input checked="" type="checkbox"/> Yes <input type="checkbox"/> No		X								
Charging System		X								
Engine Oil Pressure Gauge		X								
Temp Gauges(Eng,Trans,Hyd)		X								
Switches (Key, MFWD, Propel, etc.)		X								
Neutral Start Circuit		X								
Alarms (Travel, Backup)		X								
Monitor / Indicator Circuits		X								
Air Restriction Indicator		X								
Section Summary		X								

COOLING SYSTEM CHECKS

	NEW	GOOD	USABLE	REPAIR	REPLACE	N/A	Comments	Estimated Cost		
								Parts	Labour	Total
Coolant Level / Quality			X							
Coolant Operating Temperature			X							
Coolant Leaks			X							
Head Gasket Leakage			X							
Water Pump Check			X							
Fan Blades / Pulleys / Shrouds			X							
Fan Guard			X							
Belts / Hoses / Clamps			X							
Radiator / Oil Cooler Condition			X							
Radiator Mounts			X							
Air Conditioning System Check			X							
Section Summary			X							

ENGINE (ENGINE DETAILS NOT PROVIDED)

ENGINE CHECKS

	NEW	GOOD	USABLE	REPAIR	REPLACE	N/A	Comments	Estimated Cost		
								Parts	Labour	Total
Oil Level / Quality			X							
Oil Scanned? <input type="radio"/> Yes <input checked="" type="radio"/> No						X				
Air Intake System Check			X							
Engine Start-Up		X					MACHINE STARTS AND CRANKS GOOD			
Engine RPM (Low Idle)			X							
Engine RPM (High Idle)			X							
Fuel Leaks			X							
Inj Pmp / Supply Pmp / Fuel Filter			X							
Oil Leaks			X							
Exhaust System			X							
Does Engine Miss			X							
Excs Smoke (Fuel / Oil / Coolant)			X							
Adequate Power			X							
Adequate Oil Pressure			X							
Speed Control Check / Linkage / AI			X							
Abnormal Engine Noise			X							
TurboCharger Check			X							
BlowBy Check			X							
Compression Check (if Required)			X							
Loose / Worn Parts			X							
Section Summary			X							

TRANSMISSION CHECKS

	NEW	GOOD	USABLE	REPAIR	REPLACE	N/A	Comments	Estimated Cost		
								Parts	Labour	Total
Oil Level / Quality			X							
Oil Scanned? <input type="radio"/> Yes <input checked="" type="radio"/> No			X							
Oil Leaks						X				
Flywheel Clutch / Dampners			X							
Torque Converter Stall / Lock Up			X							
Splitter Box			X							
Trans Oil Pres (Ctrl/Engagement)			X							
FNR Operation			X							
Rate of Shift Modulation			X							
Shifting Linkage Adjustments			X							
Clutch / Brake Slippage (Pwr Shft)			X							
High / Low Shifting Performance			X							
Engine Pull Down			X							
Abnormal Transmission Noise			X							
Section Summary			X							

DIFFERENTIAL, BRAKES AND FINAL DRIVE CHECKS

	NEW	GOOD	USABLE	REPAIR	REPLACE	N/A	Comments	Estimated Cost		
								Parts	Labour	Total
Oil Level / Quality			X							
Oil Scanned? <input type="radio"/> Yes <input checked="" type="radio"/> No			X							
Oil Leaks			X							
Drive Lines / U-joints			X							
Axle Oscillation Joints			X							
Mounting Hardware			X							
Differential Gear Noise			X							
Diff Lock / Limited Slip Check			X							
Service Brake Operation / Leakage			X							
Section Summary			X							

HYDRAULIC SYSTEM CHECKS

	NEW	GOOD	USABLE	REPAIR	REPLACE	N/A	Comments	Estimated Cost		
								Parts	Labour	Total
Oil Level / Quality			X							
Oil Scanned? <input type="radio"/> Yes <input checked="" type="radio"/> No						X				
Oil Leaks				X						
Oil Operating Temperature			X							
Hydraulic Pump Perf / Cycle Times			X							
Abnormal Pump Noise						X				
Sys Chk / Related Cyl / Pvt Jnts			X							
Hoses / Lines			X				HOSES LEAKING IN CENTER SECTION			
Winch / Fairleads			X							
Control Valves / Relief Valves			X							
Steering Operational Check			X							
Steering Priority Vlv Opr Check			X							
Propel/FNR			X							
Section Summary			X							

CHASSIS AND FRAME CHECKS

	NEW	GOOD	USABLE	REPAIR	REPLACE	N/A	Comments	Estimated Cost		
								Parts	Labour	Total
Main Frame			X							
Equipment / Engine Frame			X							
Axles / Tie Rods			X							
Cab / ROPS Frame			X							
Frame Articulation Joints			X							
Grapple Frame			X				PLAY IN GRAPPLE			
Crane / Boom			X				A LITTLE PLAY IN BOOM/ ARCH			
Grapple (Pin/Bush/Dampner)			X							
Frame Oscillation			X							
Section Summary			X							

GROUND ENGAGING TOOLS

	% remaining	NEW	GOOD	USABLE	REPAIR	REPLACE	N/A	Comments	Estimated Cost		
									Parts	Labour	Total
Blades	50%		X					PLAY IN BLADE			
Cutting Edge	40%		X								
Section Summary											

TYRES/RIMS

	Tire size	Tire ply	% remaining	NEW	GOOD	USABLE	REPAIR	REPLACE	N/A	Comments	Estimated Cost		
											Parts	Labour	Total
Front: Right	35.5		30%		X								
Front: Left	35.5							X					
Drive: Right	35.5		20%			X							
Drive: Left	35.5		20%			X							
Section Summary													

Stock Number: 460360

Model: S350 Serial Number: 1W90S350AM0001438

ADDITIONAL PHOTOS



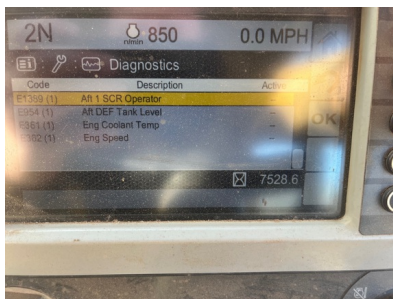
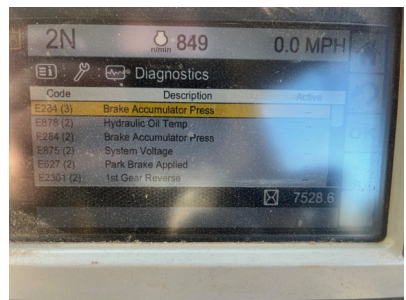
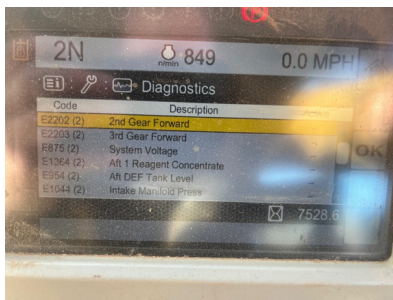
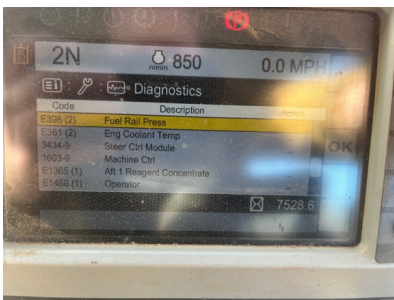
Stock Number: 460360

Model: S350 Serial Number: 1W90S350AM0001438



Stock Number: 460360

Model: S350 Serial Number: 1W90S350AM0001438



Stock Number: 460360

Model: S350 Serial Number: 1W90S350AM0001438