

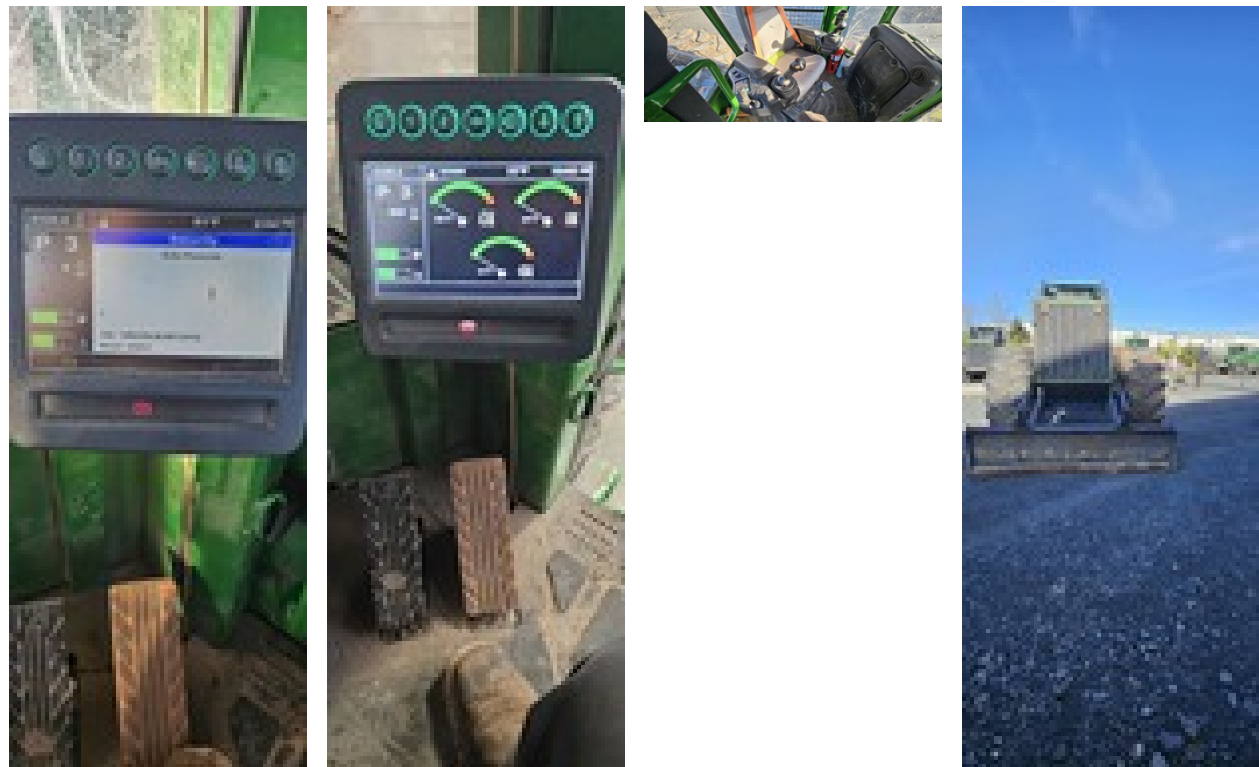


EVAL INSPECTION — ADVANCED — FORESTRY SKIDDERS

2021 John Deere 648L-II
Stock: 162073
Serial: 1DW648LBCMF709762
Cab w/ AC • Limb Risers • Dual Funct Grapple • Stacking
Blade • Winch • 35.5 Tyres
Warranty Unknown

STORAGE LOCATION
Stribling Equipment / 178631
Texarkana, AR, 71854
Contact:

PHOTOS (18 Total)



SUMMARY

Overall Condition: AVERAGE
Overall Comments: RIGHT FRONT AND REAR LIGHTS NOT WORKING, WINCH CABLE BROKEN, HOLE IN LEFT SCREEN ON LEFT SIDE, LOWER SCREEN ON LEFT SIDE BENT IN, MISSING RADIO ANTENNA, MISSING FRONT WIPER
Evaluator's Name: T TAYLOR
Operated Machine: Yes
Hours: 4,320

Stock Number: 162073

Model: 648L-II Serial Number: 1DW648LBCMF709762

							Estimated Cost			
	E X C	G O O D	A V G	F A I R	P O O R	N / A	Comments	Parts	Labour	Total
General Appearance		X						0	0	0
Instruments / Controls		X						0	0	0
Cooling System Checks		X						0	0	0
Engine Checks		X						0	0	0
Transmission Checks		X						0	0	0
Differential, Brakes and Final Drive Checks		X						0	0	0
Hydraulic System Checks		X						0	0	0
Chassis and Frame Checks		X						0	0	0
Ground Engaging Tools		X						0	0	0
Tyres/Rims			X					0	0	0

GENERAL APPEARANCE

								Estimated Cost		
	NEW	GOOD	USABLE	REPAIR	REPLACE	N / A	Comments	Parts	Labour	Total
Paint		X								
Sheet Metal		X								
Rust / Corrosion						X				
Seat / Seat Belt / Rotation		X								
Doors / Glass			X							
Lights				X			2 LIGHTS OUT			
Mirrors		X								
Cab Interior		X								
Periodic Maintenance			X							
PIPS Complete		X								
Parking Brake / Linkage / Lock		X								
Decals			X							
Operators Manual		X								
Pilot Shut Off / Neutral Lock		X								
Shields/Guards(Drive Shaft)		X								
Section Summary		X								

INSTRUMENTS / CONTROLS

								Estimated Cost		
	NEW	GOOD	USABLE	REPAIR	REPLACE	N / A	Comments	Parts	Labour	Total
Hour Meter: Original <div><input checked="" type="checkbox"/> Yes <input type="checkbox"/> No</div> Operating <div><input checked="" type="checkbox"/> Yes <input type="checkbox"/> No</div>		X								
Charging System		X					26.7			
Engine Oil Pressure Gauge		X					70/82			
Temp Gauges(Eng,Trans,Hyd)		X								
Switches (Key, MFWD, Propel, etc.)		X								
Neutral Start Circuit		X								
Alarms (Travel, Backup)		X								
Monitor / Indicator Circuits		X								
Air Restriction Indicator		X								
Section Summary		X								

COOLING SYSTEM CHECKS

								Estimated Cost		
	NEW	GOOD	USABLE	REPAIR	REPLACE	N / A	Comments	Parts	Labour	Total
Coolant Level / Quality		X								
Coolant Operating Temperature		X								
Coolant Leaks						X				
Head Gasket Leakage		X								
Water Pump Check		X								
Fan Blades / Pulleys / Shrouds		X								
Fan Guard		X								
Belts / Hoses / Clamps		X								
Radiator / Oil Cooler Condition		X								
Radiator Mounts		X								
Air Conditioning System Check		X								
Section Summary		X								

ENGINE (ENGINE DETAILS NOT PROVIDED)

ENGINE CHECKS

								Estimated Cost		
	NEW	GOOD	USABLE	REPAIR	REPLACE	N / A	Comments	Parts	Labour	Total
Oil Level / Quality		X								
Oil Scanned? X Yes <input type="radio"/> No		X								
Air Intake System Check		X								
Engine Start-Up		X								
Engine RPM (Low Idle)		X				900				
Engine RPM (High Idle)		X				1800				
Fuel Leaks		X								
Inj Pmp / Supply Pmp / Fuel Filter		X								
Oil Leaks		X								
Exhaust System		X								
Does Engine Miss		X				NO				
Excs Smoke (Fuel / Oil / Coolant)		X				NO				
Adequate Power		X								
Adequate Oil Pressure		X								
Speed Control Check / Linkage / AI		X								
Abnormal Engine Noise		X								
TurboCharger Check		X								
BlowBy Check		X								
Compression Check (if Required)		X								
Loose / Worn Parts		X								
Section Summary		X								

TRANSMISSION CHECKS

								Estimated Cost		
	NEW	GOOD	USABLE	REPAIR	REPLACE	N / A	Comments	Parts	Labour	Total
Oil Level / Quality		X								
Oil Scanned? <div><input checked="" type="radio"/> Yes <input type="radio"/> No</div>		X								
Oil Leaks		X								
Flywheel Clutch / Dampners		X								
Torque Converter Stall / Lock Up						X				
Splitter Box						X				
Trans Oil Pres (Ctrl/Engagement)		X								
FNR Operation		X								
Rate of Shift Modulation		X								
Shifting Linkage Adjustments						X				
Clutch / Brake Slippage (Pwr Shft)						X				
High / Low Shifting Performance						X				
Engine Pull Down		X								
Abnormal Transmission Noise		X								
Section Summary		X								

DIFFERENTIAL, BRAKES AND FINAL DRIVE CHECKS

								Estimated Cost		
	NEW	GOOD	USABLE	REPAIR	REPLACE	N / A	Comments	Parts	Labour	Total
Oil Level / Quality		X								
Oil Scanned? <div><input checked="" type="radio"/> Yes <input type="radio"/> No</div>		X								
Oil Leaks		X								
Drive Lines / U-Joints		X								
Axle Oscillation Joints		X								
Mounting Hardware		X								
Differential Gear Noise						X				
Diff Lock / Limited Slip Check		X								
Service Brake Operation / Leakage		X								
Section Summary		X								

HYDRAULIC SYSTEM CHECKS

							Estimated Cost			
	NEW	GOOD	USABLE	REPAIR	REPLACE	N / A	Comments	Parts	Labour	Total
Oil Level / Quality				X			25%			
Oil Scanned? X Yes <input type="radio"/> No		X								
Oil Leaks		X								
Oil Operating Temperature		X								
Hydraulic Pump Perf / Cycle Times		X								
Abnormal Pump Noise		X								
Sys Chk / Related Cyl / Pvt Jnts		X								
Hoses / Lines		X								
Winch / Fairleads				X			BROKEN			
Control Valves / Relief Valves		X								
Steering Operational Check		X								
Steering Priority Vlv Opr Check		X								
Propel/FNR		X								
Section Summary		X								

CHASSIS AND FRAME CHECKS

								Estimated Cost		
	NEW	GOOD	USABLE	REPAIR	REPLACE	N / A	Comments	Parts	Labour	Total
Main Frame		X								
Equipment / Engine Frame		X								
Axles / Tie Rods		X								
Cab / ROPS Frame		X								
Frame Articulation Joints		X								
Grapple Frame		X								
Crane / Boom		X								
Grapple (Pin/Bush/Dampner)		X								
Frame Oscillation		X								
Section Summary		X								

GROUND ENGAGING TOOLS

									Estimated Cost		
	% remaining	NEW	GOOD	USABLE	REPAIR	REPLACE	N / A	Comments	Parts	Labour	Total
Blades	90%		X								
Cutting Edge			X								
Section Summary			X								

TYRES/RIMS

											Estimated Cost		
	Tire size	Tire ply	% remaining	NEW	GOOD	USABLE	REPAIR	REPLACE	N / A	Comments	Parts	Labour	Total
Front: Right	35.5	32	50%			X							
Front: Left	35.5	32	50%			X							
Drive: Right	35.5	32	50%			X							
Drive: Left	35.5	32	50%			X							
Section Summary						X							

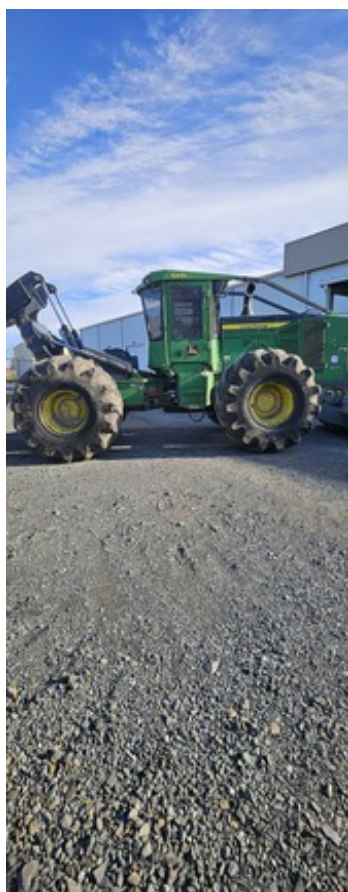
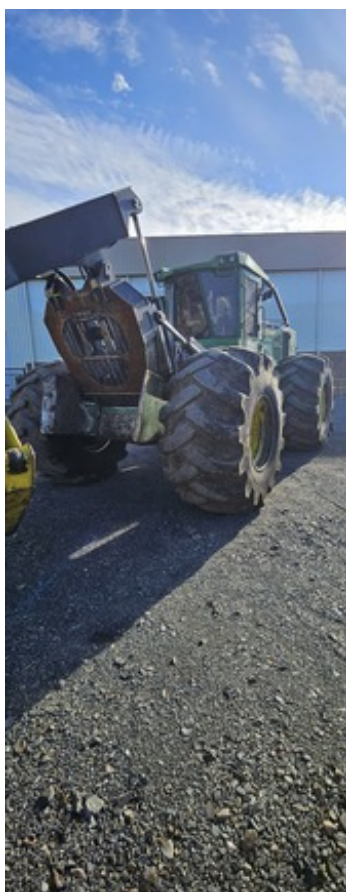
ADDITIONAL PHOTOS

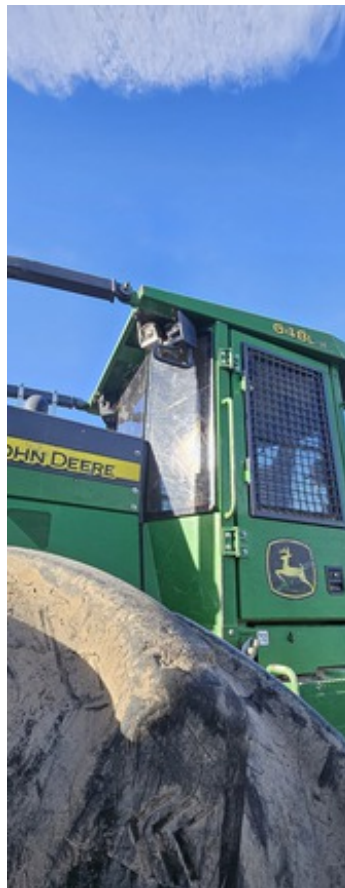
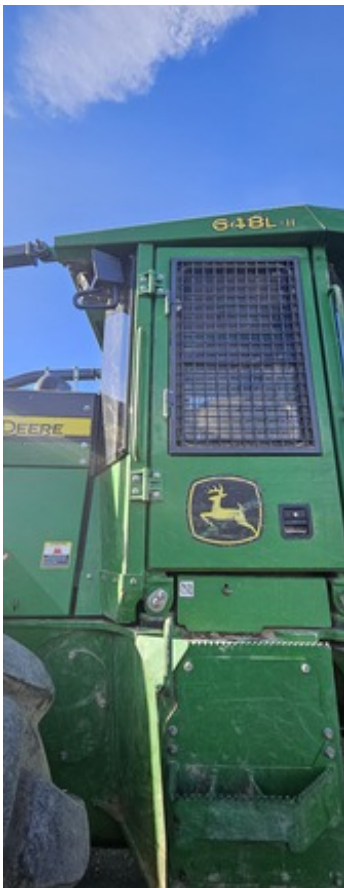




Stock Number: 162073

Model: 648L-II Serial Number: 1DW648LBCMF709762





Stock Number: 162073

Model: 648L-II Serial Number: 1DW648LBCMF709762