

Stock Number: LT717899

Model: 843LB Serial Number: 1DW843LBEPL717899

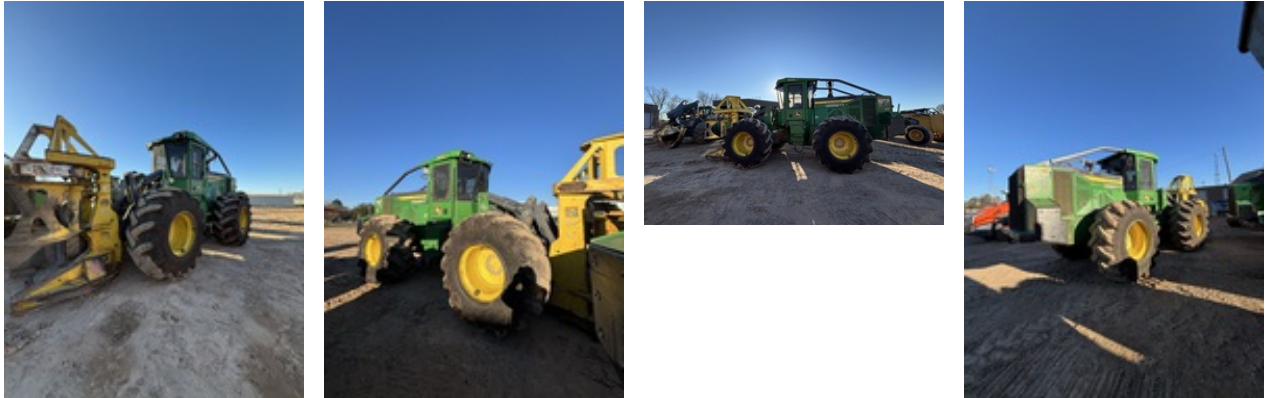
**DOGGETT**

**EVAL INSPECTION — ADVANCED — FORESTRY FELLER BUNCHERS**

2023 John Deere 843LB  
 Stock: LT717899  
 Serial: 1DW843LBEPL717899  
 Cab w/ AC • Standard Track • Standard Boom • 30.5 Tyres • Saw -  
 Continuous • Saw  
 Warranty Unknown

STORAGE LOCATION  
**Doggett Machinery Services / 177104**  
 Alexandria, LA, 71301  
 Contact: DONALD LITTLETON 318-343-8787

**PHOTOS (26 Total)**



**SUMMARY**

**Overall Condition:** GOOD  
**Overall Comments:** MACHINE IN GOOD CONDITION  
**Evaluator's Name:** JOE MCCARVER  
**Operated Machine:** Yes  
**Hours:** 4,190

	E X C	G O O D	A V G	F A I R	P O O R	N / A	Comments	Estimated Cost		
								Parts	Labour	Total
General Appearance		X						0	0	0
Instruments / Controls		X						0	0	0
Cooling System Checks		X						0	0	0
Engine Checks		X						0	0	0
Transmission Checks		X						0	0	0
Differential, Brakes and Final Drive Checks		X						0	0	0
Hydraulic System Checks		X						0	0	0
Chassis and Frame Checks		X						0	0	0
Tyres/Undercarriage		X						0	0	0
Undercarriage						X		0	0	0
Forestry Heads & Attachments		X						0	0	0
Undercarriage Measurements								0	0	0

**GENERAL APPEARANCE**

	NEW	GOOD	USABLE	REPAIR	REPLACE	N/A	Comments	Estimated Cost		
								Parts	Labour	Total
Sheet Metal		X								
Rust / Corrosion		X								
Paint		X								
Seat / Seat Belt / Rotation		X								
Doors / Glass		X								
Lights			X							
Mirrors		X								
Cab Interior		X								
Periodic Maintenance	X									
PIPS Complete		X								
Parking Brake / Linkage / Lock		X								
Decals		X								
Operators Manual		X								
Pilot Shut Off / Neutral Lock		X								
Shields/Guards(Drive Shaft)		X								
Section Summary		X								

**INSTRUMENTS / CONTROLS**

	NEW	GOOD	USABLE	REPAIR	REPLACE	N/A	Comments	Estimated Cost		
								Parts	Labour	Total
Hour Meter: Original <input checked="" type="checkbox"/> Yes <input type="checkbox"/> No Operating <input checked="" type="checkbox"/> Yes <input type="checkbox"/> No		X								
Charging System		X								
Engine Oil Pressure Gauge		X								
Temp Gauges(Eng,Trans,Hyd)		X								
Switches (Key, MFWD, Propel, etc.)		X								
Neutral Start Circuit		X								
Alarms (Travel, Backup)		X								
Monitor / Indicator Circuits		X								
Air Restriction Indicator		X								
Section Summary		X								

**COOLING SYSTEM CHECKS**

	NEW	GOOD	USABLE	REPAIR	REPLACE	N/A	Comments	Estimated Cost		
								Parts	Labour	Total
Coolant Level / Quality		X								
Coolant Operating Temperature		X								
Coolant Leaks		X								
Head Gasket Leakage		X								
Water Pump Check		X								
Fan Blades / Pulleys / Shrouds		X								
Fan Guard		X								
Belts / Hoses / Clamps		X								
Radiator / Oil Cooler Condition		X								
Radiator Mounts		X								
Air Conditioning System Check		X								
Section Summary		X								

**ENGINE (ENGINE DETAILS NOT PROVIDED)**

**ENGINE CHECKS**

	NEW	GOOD	USABLE	REPAIR	REPLACE	N/A	Comments	Estimated Cost		
								Parts	Labour	Total
Oil Level / Quality		X								
Oil Scanned? X Yes    O No		X								
Air Intake System Check		X								
Engine Start-Up		X								
Engine RPM (Low Idle)		X								
Engine RPM (High Idle)		X								
Fuel Leaks		X								
Inj Pmp / Supply Pmp / Fuel Filter		X								
Oil Leaks		X								
Exhaust System		X								
Does Engine Miss		X								
Excs Smoke (Fuel / Oil / Coolant)		X								
Adequate Power		X								
Adequate Oil Pressure		X								
Speed Control Check / Linkage / AI		X								
Abnormal Engine Noise		X								
TurboCharger Check		X								
BlowBy Check		X								
Compression Check (if Required)		X								
Loose / Worn Parts		X								
Section Summary		X								

**TRANSMISSION CHECKS**

	NEW	GOOD	USABLE	REPAIR	REPLACE	N/A	Comments	Estimated Cost		
								Parts	Labour	Total
Oil Level / Quality		X								
Oil Scanned? X Yes    O No		X								
Oil Leaks		X								
Flywheel Clutch / Dampners		X								
Torque Converter Stall / Lock Up						X				
Splitter Box		X								
Trans Oil Pres (Ctrl/Engagement)		X								
Gear Mesh (Manual Transmission)		X								
FNR Operation		X								
Rate of Shift Modulation		X								
Shifting Linkage Adjustments		X								
Clutch / Brake Slippage (Pwr Shft)		X								
Trk Pmp / Mtr Phase (Hydrostatic)		X								
High / Low Shifting Performance		X								
Inching Pedal		X								
Engine Pull Down		X								
PTO						X				
Abnormal Transmission Noise		X								
Section Summary		X								

**DIFFERENTIAL, BRAKES AND FINAL DRIVE CHECKS**

	NEW	GOOD	USABLE	REPAIR	REPLACE	N/A	Comments	Estimated Cost		
								Parts	Labour	Total
Oil Level / Quality		X								
Oil Scanned? X Yes    O No		X								
Oil Leaks		X								
Drive Lines / U-Joints		X								
Axle Oscillation Joints		X								
Mounting Hardware		X								
Differential Gear Noise		X								
Diff Lock / Limited Slip Check		X								
Service Brake Operation / Leakage		X								
Steering Clutch / Brake Operation		X								
Final Drives		X								
Front Wheel Drive Operation		X								
Section Summary		X								

**HYDRAULIC SYSTEM CHECKS**

	NEW	GOOD	USABLE	REPAIR	REPLACE	N/A	Comments	Estimated Cost		
								Parts	Labour	Total
Oil Level / Quality		X								
Oil Scanned? X Yes    O No		X								
Oil Leaks		X								
Oil Operating Temperature		X								
Hydraulic Pump Perf / Cycle Times		X								
Abnormal Pump Noise		X								
Sys Chk / Related Cyl / Pvt Jnts		X								
Hoses / Lines			X							
Swing		X								
Propel/FNR		X								
Axle Suspension / Accumulator		X								
Aux Hyd / Valve		X								
Control Valves / Relief Valves		X								
Steering Operational Check		X								
Steering Priority Vlv Opr Check		X								
Propel Drive Pressure (Mistracks?)		X								
Section Summary		X								

**CHASSIS AND FRAME CHECKS**

	NEW	GOOD	USABLE	REPAIR	REPLACE	N/A	Comments	Estimated Cost		
								Parts	Labour	Total
Main Frame		X								
Equipment / Engine Frame		X								
Axles / Tie Rods		X								
Cab / ROPS Frame		X								
Swing Frame		X								
Frame Articulation Joints		X								
Boom (Loader / Backhoe / Excvtr)		X								
Dipperstick / Bucket Links		X								
Track Frame		X								
Boom Extension		X								
Frame Oscillation		X								
Leveling Frame		X								
Section Summary		X								

**TYRES/UNDERCARRIAGE**

	Tire size	Tire ply	% remaining	NEW	GOOD	USABLE	REPAIR	REPLACE	N/A	Comments	Estimated Cost		
											Parts	Labour	Total
Track Frames / Guards										X			
Front Crossbar										X			
Front: Right	30.5		60%		X								
Front: Left	30.5		60%		X								
Rear Crossbar										X			
Track Adjusters										X			
Drive: Right	30.5		60%		X								
Drive: Left	30.5		60%		X								
Overall Undercarriage Condition					X								
Trailer: Right										X			
Trailer: Left										X			
Section Summary					X								

**UNDERCARRIAGE**

	NEW	GOOD	USABLE	REPAIR	REPLACE	N/A	Comments	Estimated Cost		
								Parts	Labour	Total
Section Summary						X				

**FORESTRY HEADS & ATTACHMENTS**

	NEW	GOOD	USABLE	REPAIR	REPLACE	N/A	Comments	Estimated Cost		
								Parts	Labour	Total
Feed Rollers						X				
Knives						X				
Encoders/Wiring						X				
Counting System						X				
Saw Bar/Chain		X								
Frame/Arm Condition		X								
Independent Wheel						X				
Topping Saw						X				
Saw Main Frame		X								
Arms/Cylinders		X								
Saw Main Bearing		X								
Saw Drive Motor		X								
Saw Disc/Teeth		X								
Rotation						X				
Section Summary		X								

**UNDERCARRIAGE MEASUREMENTS**

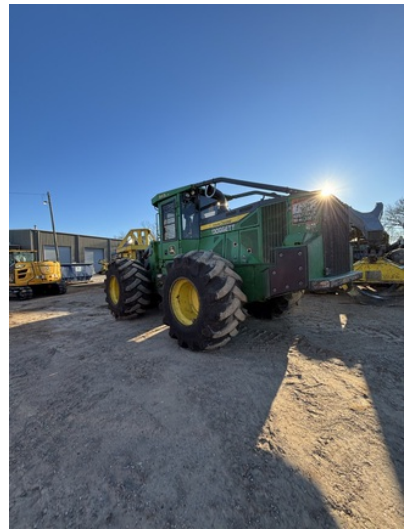
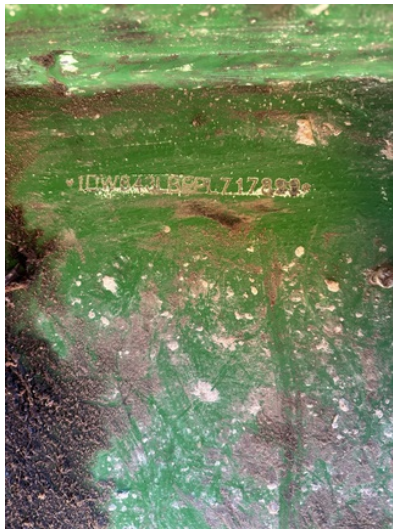
	Dimension	% remaining	Comments	Estimated Cost		
				Parts	Labour	Total
Grouser Type	N/A					
Grouser Width	N/A					
Grouser Width	N/A					
Grousers - Shoes: Right	N/A					
Grousers - Shoes: Left	N/A					
Track Pitch: Right	N/A					
Track Pitch: Left	N/A					
Track Bushings: Right Have pins/bushings been turned? <input type="radio"/> Yes <input checked="" type="radio"/> No	N/A					
Track Bushings: Left Chain sealed and lubricated? <input type="radio"/> Yes <input checked="" type="radio"/> No	N/A					
Track Links: Right	N/A					
Track Links: Left	N/A					
Idlers: Right	N/A					
Idlers: Left	N/A					
Carrier Rollers: Right	N/A					
Carrier Rollers: Left	N/A					
Track Rollers: Right	N/A					
Track Rollers: Left	N/A					
Sprockets: Right	N/A					
Sprockets: Left	N/A					

**ADDITIONAL PHOTOS**



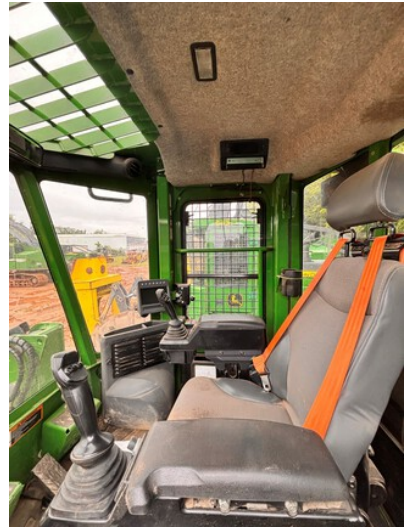
Stock Number: LT717899

Model: 843L Serial Number: 1DW843LBEPL717899



Stock Number: LT717899

Model: 843L Serial Number: 1DW843LBEPL717899



Stock Number: LT717899

Model: 843L Serial Number: 1DW843LBEPL717899

