

Stock Number: 0U610880

Model: 250G LC Serial Number: 1FF250GXJJF610880



EVAL INSPECTION — QUICK — EXCAVATORS

2018 John Deere 250G LC
Stock: 0U610880
Serial: 1FF250GXJJF610880
Cab w/ AC • Long Arm • Long Track • Wide Pads • 81 cm Pads • Coupler • 76 cm • 137 cm Bucket • Topcon System to be removed, Groeneveld Twin-Lube Auto-Grease, JRB SmartLoc Dedicated Coupler, both Buckets to be Traded, kinked Chains just replaced

STORAGE LOCATION
Brandt Tractor Ltd. / 765392
London, ON, N6E 1L1
Contact:

PHOTOS (45 Total)



SUMMARY

Overall Condition: VERY GOOD
Overall Comments: Machine would be rated Excellent & immaculate other than faded Paint & very minor scuff on RH Rear Access Door & D-Channel.
Trade Value: \$175,000 **Retail:** \$230,000
Evaluator's Name: Jack Shewan
Operated Machine: Yes
Hours: 3,300 (Works, Low-hours)

							Estimated Cost			
	EXC	GOOD	AVG	FAIR	POOR	N A	Comments	Parts	Labour	Total
General Appearance		X					Tch-Up Pnt only/re-paint new! minor dent RH Rr Dr,Mirror	2000	2500	4500
Instruments / Controls		X								
Cooling System Checks		X								
Engine Checks		X								
Transmission Checks						X				
Differential, Brakes and Final Drive Checks		X								
Hydraulic System Checks		X								
Chassis and Frame Checks		X					All good, (1) Shim in Coupler/Stick & like New			
Ground Engaging Tools		X								
Undercarriage		X					New Chains (+) to replace few kinked Pads			
Undercarriage Measurements										
										4500

Stock Number: 0U610880

Model: 250G LC Serial Number: 1FF250GXJJF610880

ATTACHMENTS

Item	Make	Type	Size	Serial Number	Condition
Coupler	JRB	Hyd. Pin-Grabber	Smartloc/Dedicated		Good
Bucket	Esco	Exc. w/Flares & Shrouds	54"/2.2 Yd.		Good
Bucket	Esco	Exc.	30"		Good

GROUND ENGAGING TOOLS

									Estimated Cost		
	% remaining	NEW	GOOD	USABLE	REPAIR	REPLACE	N / A	Comments	Parts	Labour	Total
Buckets	80%		X								
Blades							X				
Teeth / Tips	30%			X				Replace Soon	1800	200	2000
End Bits							X				
Cutting Edge							X				
2000											

UNDERCARRIAGE MEASUREMENTS

				Estimated Cost		
	Dimension	% remaining	Comments	Parts	Labour	Total
Track Links		90%	New Chains			
Track Bushings Chain sealed and lubricated? <input checked="" type="radio"/> Yes <input type="radio"/> No Have pins/bushings been turned? <input type="radio"/> Yes <input checked="" type="radio"/> No		90%	New Chains			
Track Pitch		90%				
Grousers - Shoes	32/32"	100%				
Idlers		80%				
Carrier Rollers		60%				
Track Rollers		70%				
Sprockets		80%				

ADDITIONAL PHOTOS



Stock Number: 0U610880

Model: 250G LC Serial Number: 1FF250GXJJF610880



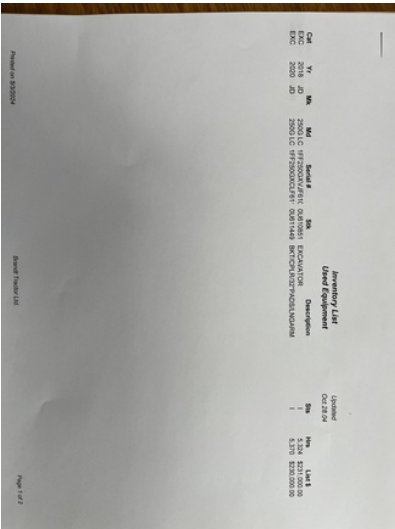
Stock Number: 0U610880

Model: 250G LC Serial Number: 1FF250GXJJF610880



Stock Number: 0U610880

Model: 250G LC Serial Number: 1FF250GXJJF610880



High/Low/Average | MachineryTrader.com

HOME > CONSTRUCTION EQUIPMENT > HIGH/LOW/AVERAGE

North America Listings

High/Low/Average

← Return to Listings

Category: Crawler Excavators
Manufacturer: DEERE
Model: 250G LC
Year: 2018 - 2019
Hours: 2000 - 4500

HOW MUCH IS YOUR EQUIPMENT WORTH?

All new VIP access has the answer!

UNLOCK FREE VIP ACCESS

	Retail High/Low/Average	Auction High/Low/Average
Total number of listings found	13	5
Highest price found	USD \$231,250	USD \$166,700
Lowest price found	USD \$127,000	USD \$112,500
Average price	USD \$188,212	USD \$136,630
Avg. w/o High & Low	USD \$189,864	USD \$134,650

Here is an at-a-glance view of current "quick sale", auction prices, and also current asking, or "retail", prices. We have done computations on both "Equipment For Sale" & "Auction Results" listings for the type of equipment you specified. Above you see the average price found, the highest & lowest prices, and the average price computed again after throwing out the highest & lowest prices. For clarification, we've also displayed the number of listings on which the computations were performed. (NOTE: Items without a price have been omitted from the calculations.)