

Stock Number: 261901

Model: 643L-II Serial Number: 1DW643LBCKF702447

EVAL INSPECTION — ADVANCED — FORESTRY FELLER BUNCHERS

2019 John Deere 643L-II
stock: 261901
serial: 1DW643LBCKF702447
Cab w/ AC • Standard Boom • 30.5 Tires • Saw • Saw - Continuous
No Warranty. Unit qualifies for Deere Certified Used Extended Warranty

STORAGE LOCATION
Dobbs Equipment Southeast, LLC / 177357
West Columbia, SC, 29169
Contact: Jesse Sewell

PHOTOS (42 Total)



SUMMARY

Overall Condition: GOOD
Overall Comments: Powertrain and hydraulic systems operational. Limb sweeps bent, minor. Two exterior LED lights inoperable. Pin/bushing movement present in sawhead gathering arms. Left side cab door latch not operational. Fault codes 111.18 for low coolant level and 2602.1 for hydraulic oil level low are active. Issues causing fault codes will be repaired.
Evaluator's Name: John Hendrix
Operated Machine: Yes
Hours: 5,409 (Monitor works, original)

								Estimated Cost		
	E X C	G O O D	A V G	F A I R	P O O R	N / A	Comments	Parts	Labor	Total
General Appearance		X					Unit is in good cosmetic condition for age & hours.	0	0	0
Instruments / Controls		X					All gauges and controls are functional.	0	0	0
Cooling System Checks				X			Coolant low level alarm active. No immediate signs of leak.	0	0	0
Engine Checks		X					Engine runs well with no engine related fault codes.	0	0	0
Transmission Checks		X					Transmission functions well in all speeds and directions.	0	0	0
Differential, Brakes and Final Drive Checks		X					Drivetrain components are in good working order.	0	0	0
Hydraulic System Checks				X			Low hydraulic oil level and alarm active.	0	0	0
Chassis and Frame Checks		X					Minor pin/bushing movement throughout chassis components.	0	0	0
Tires / Undercarriage			X				Minor cut and chunking damage throughout all tires.	0	0	0
Undercarriage						X	N/A	0	0	0
Forestry Heads & Attachments		X					Felling head is in servicable condition.	0	0	0
Undercarriage Measurements								0	0	0

Stock Number: 261901

Model: 643L-II Serial Number: 1DW643LBCKF702447

ATTACHMENTS

Item	Make	Type	Size	Serial Number	Condition
Saw	Deere	FD55		1DWFD55XJK0000772	Good

GENERAL APPEARANCE

	NEW	GOOD	USABLE	REPAIR	REPLACE	N/A	Comments	Estimated Cost		
								Parts	Labor	Total
Sheet Metal		X								
Rust / Corrosion		X								
Paint		X								
Seat / Seat Belt / Rotation		X								
Doors / Glass		X								
Lights				X			(2) Exterior worklights not operational.			
Mirrors		X								
Cab Interior		X								
Periodic Maintenance		X								
PIPS Complete		X								
Parking Brake / Linkage / Lock		X								
Decals		X								
Operators Manual		X								
Pilot Shut Off / Neutral Lock		X								
Shields/Guards(Drive Shaft)		X								
Section Summary		X					Unit is in good cosmetic condition for age & hours.			

INSTRUMENTS / CONTROLS

	NEW	GOOD	USABLE	REPAIR	REPLACE	N/A	Comments	Estimated Cost		
								Parts	Labor	Total
Hour Meter: Original <input checked="" type="checkbox"/> Yes <input type="checkbox"/> No Operating <input checked="" type="checkbox"/> Yes <input type="checkbox"/> No		X								
Charging System		X								
Engine Oil Pressure Gauge		X								
Temp Gauges(Eng,Trans,Hyd)		X								
Switches (Key, MFWD, Propel, etc.)		X								
Neutral Start Circuit		X								
Alarms (Travel, Backup)		X								
Monitor / Indicator Circuits		X								
Air Restriction Indicator		X								
Section Summary		X					All gauges and controls are functional.			

COOLING SYSTEM CHECKS

							Estimated Cost			
	NEW	GOOD	USABLE	REPAIR	REPLACE	N / A	Comments	Parts	Labor	Total
Coolant Level / Quality				X			Low level and alarm is activated.			
Coolant Operating Temperature		X								
Coolant Leaks		X								
Head Gasket Leakage		X								
Water Pump Check		X								
Fan Blades / Pulleys / Shrouds		X								
Fan Guard		X								
Belts / Hoses / Clamps		X								
Radiator / Oil Cooler Condition		X								
Radiator Mounts		X								
Air Conditioning System Check		X								
Section Summary				X			Coolant low level alarm active. No immediate signs of leak.			

ENGINE

Make	Size	Seerianumber	Tier Rating	Type
Deere	6.8L	PE6068U076065	4	diesel

Stock Number: 261901

Model: 643L-II Serial Number: 1DW643LBCKF702447

ENGINE CHECKS

							Estimated Cost			
	NEW	GOOD	USABLE	REPAIR	REPLACE	N/A	Comments	Parts	Labor	Total
Oil Level / Quality		X								
Oil Scanned? <input checked="" type="radio"/> Yes <input type="radio"/> No		X					Sample Date - 22JUN2023			
Air Intake System Check		X								
Engine Start-Up		X								
Engine RPM (Low Idle)		X								
Engine RPM (High Idle)		X								
Fuel Leaks		X								
Inj Pmp / Supply Pmp / Fuel Filter		X								
Oil Leaks		X								
Exhaust System		X								
Does Engine Miss		X								
Excs Smoke (Fuel / Oil / Coolant)		X								
Adequate Power		X								
Adequate Oil Pressure		X								
Speed Control Check / Linkage / AI		X								
Abnormal Engine Noise		X								
TurboCharger Check		X								
BlowBy Check		X								
Compression Check (if Required)						X				
Loose / Worn Parts		X								
Section Summary		X					Engine runs well with no engine related fault codes.			

Stock Number: 261901

Model: 643L-II Serial Number: 1DW643LBCKF702447

TRANSMISSION CHECKS

								Estimated Cost		
	NEW	GOOD	USABLE	REPAIR	REPLACE	N / A	Comments	Parts	Labor	Total
Oil Level / Quality		X								
Oil Scanned? X Yes <input type="radio"/> No		X					Sample Date - 22JUN2023			
Oil Leaks		X								
Flywheel Clutch / Dampners						X				
Torque Converter Stall / Lock Up						X				
Splitter Box		X								
Trans Oil Pres (Ctrl/Engagement)		X								
Gear Mesh (Manual Transmission)						X				
FNR Operation		X								
Rate of Shift Modulation		X								
Shifting Linkage Adjustments						X				
Clutch / Brake Slippage (Pwr Shft)						X				
Trk Pmp / Mtr Phase (Hydrostatic)		X								
High / Low Shifting Performance		X								
Inching Pedal						X				
Engine Pull Down						X				
PTO						X				
Abnormal Transmission Noise		X								
Section Summary		X					Tranmission functions well in all speeds and directions.			

DIFFERENTIAL, BRAKES AND FINAL DRIVE CHECKS

							Estimated Cost			
	NEW	GOOD	USABLE	REPAIR	REPLACE	N / A	Comments	Parts	Labor	Total
Oil Level / Quality		X								
Oil Scanned? X Yes <input type="radio"/> No		X					Sample Date - 22JUN2023			
Oil Leaks		X								
Drive Lines / U-Joints		X								
Axle Oscillation Joints		X								
Mounting Hardware		X								
Differential Gear Noise		X								
Diff Lock / Limited Slip Check		X								
Service Brake Operation / Leakage		X								
Steering Clutch / Brake Operation						X				
Final Drives		X								
Front Wheel Drive Operation		X								
Section Summary		X					Drivetrain components are in good working order.			

HYDRAULIC SYSTEM CHECKS

							Estimated Cost			
	NEW	GOOD	USABLE	REPAIR	REPLACE	N / A	Comments	Parts	Labor	Total
Oil Level / Quality				X			Low hydraulic oil level and alarm active.			
Oil Scanned? X Yes O No		X					Sample Date - 22JUN2023			
Oil Leaks		X								
Oil Operating Temperature		X								
Hydraulic Pump Perf / Cycle Times		X								
Abnormal Pump Noise		X								
Sys Chk / Related Cyl / Pvt Jnts		X								
Hoses / Lines		X								
Swing		X								
Propel/FNR		X								
Axle Suspension / Accumulator		X								
Aux Hyd / Valve		X								
Control Valves / Relief Valves		X								
Steering Operational Check		X								
Steering Priority Vlv Opr Check		X								
Propel Drive Pressure (Mistracks?)						X				
Section Summary				X			Low hydraulic oil level and alarm active.			

CHASSIS AND FRAME CHECKS

								Estimated Cost		
	NEW	GOOD	USABLE	REPAIR	REPLACE	N/A	Comments	Parts	Labor	Total
Main Frame			X				Limb sweeps bent, otherwise clean			
Equipment / Engine Frame		X								
Axles / Tie Rods		X								
Cab / ROPS Frame		X								
Swing Frame						X				
Frame Articulation Joints		X					Tight			
Boom (Loader / Backhoe / Excvtr)		X								
Dipperstick / Bucket Links						X				
Track Frame						X				
Boom Extension						X				
Frame Oscillation						X	Tight			
Leveling Frame						X				
Section Summary		X					Minor pin/bushing movement throughout chassis components.			

TIRES / UNDERCARRIAGE

											Estimated Cost		
	Tire size	Tire ply	% remaining	NEW	GOOD	USABLE	REPAIR	REPLACE	N/A	Comments	Parts	Labor	Total
Track Frames / Guards									X				
Front Crossbar									X				
Front: Right	30.5	26	40%		X								
Front: Left	30.5	26	40%		X								
Rear Crossbar									X				
Track Adjusters									X				
Drive: Right	30.5	26	40%		X								
Drive: Left	30.5	26	40%		X								
Overall Undercarriage Condition									X				
Trailer: Right	NA								X				
Trailer: Left	NA								X				
Section Summary						X				Minor cut and chunking damage throughout all tires.			

UNDERCARRIAGE

								Estimated Cost		
	NEW	GOOD	USABLE	REPAIR	REPLACE	N / A	Comments	Parts	Labor	Total
Section Summary						X	N/A			

FORESTRY HEADS & ATTACHMENTS

								Estimated Cost		
	NEW	GOOD	USABLE	REPAIR	REPLACE	N / A	Comments	Parts	Labor	Total
Feed Rollers						X				
Knives						X				
Encoders/Wiring						X				
Counting System						X				
Saw Bar/Chain						X				
Frame/Arm Condition		X								
Independent Wheel						X				
Topping Saw						X				
Saw Main Frame		X								
Arms/Cylinders			X				Pin/bushing movment present, minor			
Saw Main Bearing		X								
Saw Drive Motor		X								
Saw Disc/Teeth		X								
Rotation						X				
Section Summary		X					Felling head is in servicable condition.			

UNDERCARRIAGE MEASUREMENTS

	Dimension	% remaining	Comments	Estimated Cost		
				Parts	Labor	Total
Grouser Type	-					
Grouser Width	-					
Grouser Width	-					
Grousers - Shoes: Right	-					
Grousers - Shoes: Left	-					
Track Pitch: Right	-					
Track Pitch: Left	-					
Track Bushings: Right Have pins/bushings been turned? <input type="radio"/> Yes <input type="radio"/> No	-					
Track Bushings: Left Chain sealed and lubricated? <input type="radio"/> Yes <input type="radio"/> No	-					
Track Links: Right	-					
Track Links: Left	-					
Idlers: Right	-					
Idlers: Left	-					
Carrier Rollers: Right	-					
Carrier Rollers: Left	-					
Track Rollers: Right	-					
Track Rollers: Left	-					
Sprockets: Right	-					
Sprockets: Left	-					

ADDITIONAL PHOTOS



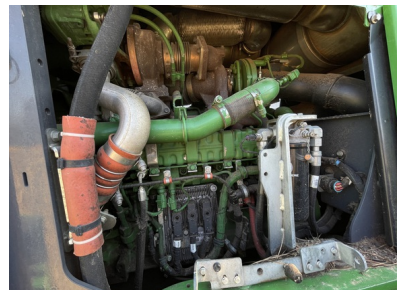
Stock Number: 261901

Model: 643L-II Serial Number: 1DW643LBCKF702447



Stock Number: 261901

Model: 643L-II Serial Number: 1DW643LBCKF702447



Stock Number: 261901

Model: 643L-II Serial Number: 1DW643LBCKF702447

